



Royal Doulton
NISBET

Heirloom Dolls





Royal Doulton
NISBET

Heirloom Dolls

The history of creating and collecting dolls stretches far back into the mists of time, with museum examples dating back to 4000 B.C.

The nineteenth century saw a great revival of this art and, to the delight of collectors, is again renewed today by Royal Doulton and House of Nisbet with their beautiful Heirloom Dolls.

For more than a century, Royal Doulton has been renowned for elegance and artistry and now ranks as the world's leading creator of hand-made figures. Today much is due to Eric Griffiths who leads a dedicated team of sculptors and artists to produce an extensive collection of sculptural pieces. Eric's painstaking craftsmanship can be seen on Heirloom Dolls in the wonderfully realistic features that transform the bone china heads and tiny hands into miniature works of art.

Again in keeping with the Victorian tradition, the seamstresses of House of Nisbet take great care in sewing the exquisite costumes which are researched and designed exclusively by Alison Nisbet. This patient work ensures that each doll is dressed to perfection.

The unique and harmonious partnership now has its place in the distinguished history of this art form, just as the Heirloom Dolls take their place in appreciative homes and collections the world over.

Firstborn Doll

The Firstborn Doll captures to perfection those wonderful early moments of wide-eyed innocence when baby is cocooned in layer upon layer of lace.

The traditional christening robe of white figured cotton is extravagantly trimmed with Nottingham lace to lie prettily over a pure cotton underdress and pantaloons.

Every detail of the bone china hands and head have been carefully sculpted by Eric Griffiths and hand-painted by Royal Doulton artists. This care combined with the skills of the Devon Wicker Company in hand-making the lovely 20in. (50cm) crib has created a doll which is a most enchanting start to any collection.

This brochure illustrates the Heirloom Doll Collection to date which includes certain limited edition dolls, such as Royal Baby Doll, that are already fully subscribed.



Victorian Birthday Dolls

The dearly loved nursery rhyme comes to life in these traditional Victorian Birthday Dolls with each day's attributes carefully reflected in the period costumes and expressive detail. That detail includes stylish hairpieces made from finest mohair to frame each delicately featured face and thoughtful presentation which includes lovely accessories such as the feather duster, the teddy bear and the miniature muff.

The skills of Royal Doulton artists and the patient needlework of House of Nisbet create an overall impression that will become as much a legend as the rhyme itself.

The dolls are approximately 12in (30.5cm) tall.



Monday's
04 Child

Tuesday's
Child

Wed
C



Wednesday's
Child

Thursday's
Child

Friday's
Child

Saturday's
Child

Sunday's
Child

Wedding Day and Little Bridesmaid Dolls

Who can resist that delightful glimpse as a bride and her bridesmaid make their radiant entrance? It is a magical moment to treasure – one that is beautifully caught in these two enchanting dolls.

The bride's ivory, silken gown is richly adorned with Nottingham lace. Her flowing veil is edged with matching lace and crowned with a coronet of tiny flowers to accentuate the silky brunette tones of her real hair.

The charming bridesmaid is dressed to match the bride in cream satin and lace. Even her bouquet and head-dress have been made to match.

Each doll is specially presented in a taffeta-lined box and would make a wonderful gift to commemorate that very special day.

Wedding Day 14in. (35cm)

Little Bridesmaid 12in. (30.5cm).



H.R.H. The Princess of Wales Doll

A delighted world looked on when, on 29th July 1981 the fairy-tale Royal Wedding of the Prince and Princess of Wales held everyone spellbound.

Distance has lent enchantment to memories of the deeply moving ceremony but now those memories are refreshed by the creation of this doll.

The bone china head captures the radiant beauty of the Princess and the hands show attention to detail that extends even to a tiny gold band for her wedding ring.

Alison Nisbet has taken immense trouble to recreate the Emmanuels' original gown in miniature. It is ivory silk taffeta edged with Honiton lace over a layered petticoat of ivory net. The veil is held by a band of diamante crystals and the bouquet is again a detailed replica of the original.

This 16in. (41cm) tall doll is available in a limited edition of 3,500 and is presented in a taffeta-lined box.



Royal Baby Doll

In celebration of the birth of H.R.H. Prince William of Wales, born 21st June 1982, this beautiful doll continues the Royal Doulton tradition for marking Royal occasions in a sensitive and thoughtful way.

The Royal Baby Doll wears a robe and bonnet of cream Honiton lace and net over taffeta. Underneath he wears charming cream cotton bloomers.

The designs are based, after careful study, on authentic Royal designs. The 17in. (43cm) canopied crib is draped with figured white and cream cotton trimmed with soft blue frills.

Pictures of Prince William and other members of the Royal Family were used as reference for the fair-haired, blue-eyed doll and other details include delicately sculpted feet and hands.

This edition is limited to only 2,500 worldwide.



H.R.H. Prince William Toddler Doll

The Royal Baby Doll was received with such enthusiasm that the edition is already fully subscribed.

Now, inspired by pictures of Prince William taken shortly after his first birthday, this toddler doll is ready to steal many more hearts.

He is dressed in a traditional blue and white sailor suit and smart naval cap – a reminder of the nautical involvement of his father and grandfather. As does every little child he carries a favourite toy; his honey-coloured teddy bear is specially made in rural England.

The 13in. (33cm) doll is beautifully sculpted with chubby arms and legs, fine hands and cherubic face in pink bone china.

In a limited edition of 2,500, he is presented with a special protective display cover.



Kate Greenaway Dolls

As a young girl, Kate Greenaway delighted in her collection of dolls, so popular in Victorian times. Little did she realise that her own works of art would provide the inspiration for a revival of such dolls.

The wistful expressions and period costumes are taken directly from Kate Greenaway's much-loved water-colour paintings and the details such as the beribboned hats, tiny shoes and baskets of flowers have been re-created with particular care to maintain the realistic effect.

The dolls are approximately 12in (30.5cm) tall and are in limited editions of 5,000 each.





Winter

Small Sister

Big Sister



The Muff



Pinkish



Waiting



Pink Ribbons



13sdown



Edwardian Social Season Dolls

In the days when social diaries were full and evenings were hectic with extravagant parties, lovely Edwardian ladies were dressed to be seen in the finest gowns and hats imaginable.

Lord's

A high point of the season was the match between Eton and Harrow – a social obligation. The ladies wore their finest attire – here an elegant lacy gown, flowery picture hat and matching parasol.

Henley Regatta

At the "Great water picnic" our blue lady would have stolen the show in her bolero and skirt with the flattering veiled hat.

Ascot

A most fashionable occasion when the elite gathered in the Royal Enclosure. No expense was spared as can be seen in this vision of black and white.

Presentation at Court

Strict regulations for débutantes required a white dress but the detail is essential to outshine the other ladies!

The dolls are 14in. (35cm) tall and only available in a limited edition of 3,500.



Lord's



Henley Regatta



Ascot 15



Presentation at Court

Christmas Doll

Stunning in scarlet, this doll is a Christmas wish come true. In an edition limited to 3,500 she will only be produced in 1983 to begin an annual series.

Open the elegant satin lined presentation box and the 14in. (35cm) tall doll appears in all her Christmas loveliness.

Eric Griffiths has achieved her gentle features which are delicately painted by Royal Doulton artists and Alison Nisbet has dressed her in a rich red velvety gown with matching hat and boots all edged with clouds of white down.

She carries a tiny replica of her own gift box containing a little Christmas card for a personal message.

This exquisite doll has a protective display cover to keep her as fresh as on Christmas morning.

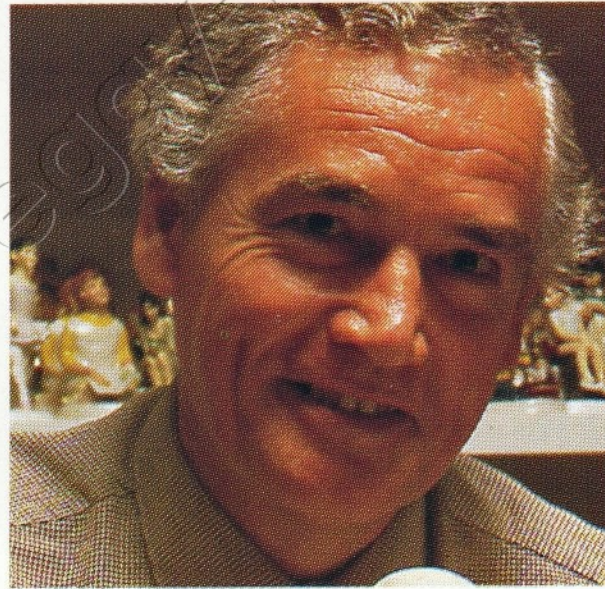




Royal Doulton
NISBET

Heirloom Dolls

Heirloom Dolls and their creators



As Director of Ceramic Sculpture, Eric Griffiths brings a wealth of experience and considerable talent to bear on the creation of many superb pieces for Royal Doulton. He is particularly known for his sensitive animal studies, historical figures and of course, for the ever growing collection of Heirloom Dolls.

Although his career has encompassed portrait painting and illustrative work he found his natural talent gives him the most pleasure when he is sculpting. This has led him to several distinguished positions – and to modelling all manner of subjects from tractors to toy soldiers, from life-size figures to miniature horses. He has even obtained patents on two inventions.

At Royal Doulton he leads a team of skilled artists and craftsmen and yet still gives a great deal of thought and care to the intricate work involved in creating the works of art which are the joy of collectors.



Alison Nisbet is part of a great doll-making tradition in Britain. The legend that is House of Nisbet.

Alison's mother, Peggy Nisbet, began making dolls in 1953 and soon established the House of Nisbet that would win awards and acclaim worldwide. As a child, Alison saw her mother at work and was captivated by the little dolls, so it was a natural step for her to take full charge of costume research and design for all Royal Doulton Nisbet Heirloom Dolls.

Her dedication and attention to detail provides the most beautiful costumes imaginable, whether they are re-creations of original designs or wholly her own work.

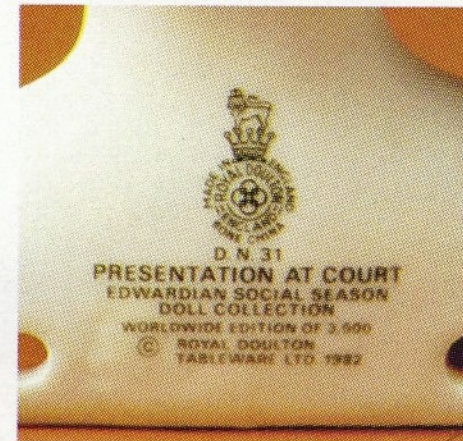
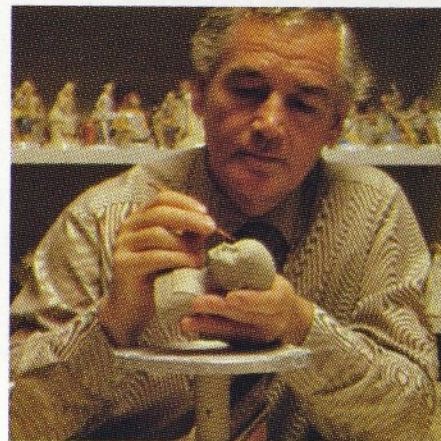
As a much admired and respected person in the world of dolls, Alison is in demand as a speaker and makes frequent lecture tours in many countries.

How Heirloom Dolls are made

The delightful sight of a complete Heirloom Doll can only be enhanced by discovering the enthusiasm and dedication which have gone into its creation. Each doll is a unique work showing the spirit of the artists in the fine detail and especially in the expressive china faces.

After close liaison and discussion with Alison Nisbet, Eric Griffiths takes the first step by sculpting the original model from which master moulds are taken for the head and tiny hands in ivory or pink bone china. This subtly coloured bone china is a perfect medium for the gentle tones which bring warmth and life to the doll's face.

Successful firing of the china requires a heat of 1230°C. – this means twelve hours for the kiln to reach the right temperature and another twelve hours for cooling before the kiln may be



safely opened. Next, liquid glaze is applied, in itself a very skilled task, and the parts are again fired to produce the delicate sheen.

The sculptor's mark appears on the nape of the neck of each perfect china piece, alongside the Royal Doulton backstamp.

Each piece is hand-painted by talented artists to give the lovely bloom to the complexion and great care is taken with the eyes for they reflect the whole personality of the doll and bring it to life.

The work is compared with Eric Griffiths's original to ensure that his intention is honoured. Then two further firings are necessary to fix the features so they will live up to their name as true Heirlooms and stay beautiful for generations.



After completion and inspection, the heads and hands and sometimes tiny feet are taken to House of Nisbet to be transformed into the final creation.



The china parts are attached to a soft cloth body and the doll is ready to be dressed in the specially made clothes.



Imagine the care and patience this takes. To realise how long the Princess of Wales wedding gown took to make is to appreciate the dedication of House of Nisbet in re-creating it in miniature. Skilled seamstresses work with immense care to ensure a perfect replica – a striving for perfection that is the cornerstone of House of Nisbet.

At this stage, for a limited edition, an individual label bearing the number is sewn into the doll's costume.

Next comes the crowning glory – a hairstyle which will complement the doll's character. In the earliest dolls, hair was usually sculpted or moulded. Later real human hair was often used and applied direct or woven into miniature wigs. In due course this was largely replaced by mohair. Today Royal Doulton and Nisbet use all three approaches as the occasion requires. For instance, the Princess of Wales doll has sculpted hair which will remain forever changeless as the wedding portrait itself.



Now, tiny trimmings are added to maintain the proportions of the costume. It requires great dexterity to create a tiny hat, fine lace, a ribbon here, a parasol there. But such detail is the reason for the success of House of Nisbet.

Finally the doll is lovingly placed in its taffeta or satin lined box with a special certificate if it is part of a limited edition.

It is now ready for presentation and little wonder that Heirloom Dolls are so eagerly sought by discerning collectors all over the world.



Royal Doulton
NISBET

Heirloom Dolls

Royal Doulton Tableware Limited,
P.O. Box 301, Burslem,
Stoke-on-Trent ST6 2AW, England.

Doulton and Co. Inc.,
700 Cottontail Lane, Somerset,
New Jersey 08873, USA.

Doulton Canada Inc.,
850 Progress Avenue, Scarborough,
Ontario M1H 3C4, Canada.

Doulton Tableware Pty. Limited,
17-23 Merriwa Street, Gordon,
NSW 2072, Australia.

nv Royal Doulton (Belgium) sa,
25 Europark Noord, Sint Niklaas 2700,
Belgium.

Doulton & Co. (S.A.) Pty. Limited,
P.O. Box 6254, Johannesburg 2000,
South Africa.

Materials used may be subject to alteration
without notice.

These are Royal Doulton/Nisbet models on
which artistic copyright is claimed. Any instance of
infringement will be prosecuted.

Printed in England

© Royal Doulton Tableware Limited 1983
Gordon Clark Publicity Ltd.

